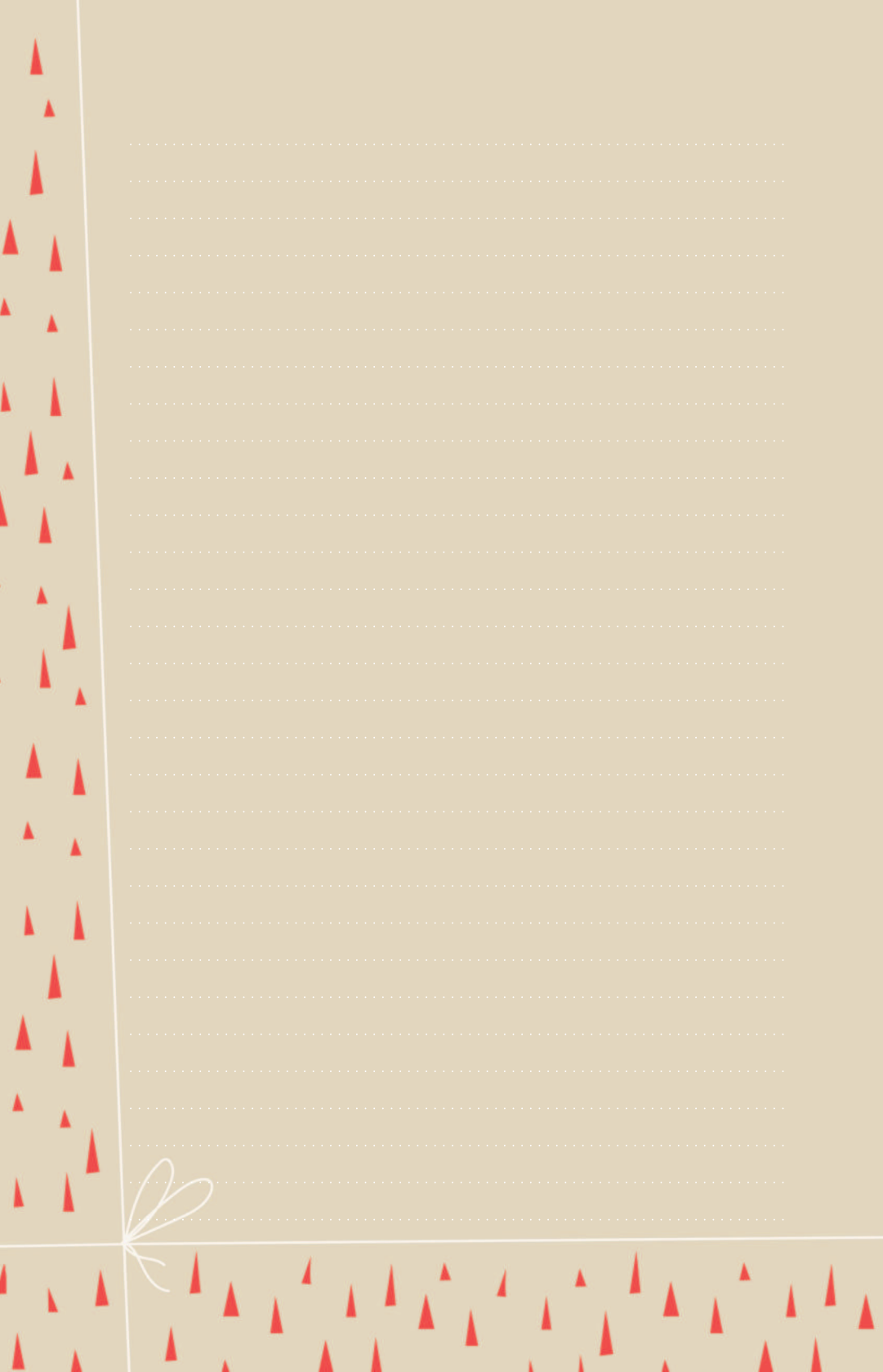


Этот блокнот принадлежит









Handwriting practice lines consisting of 20 horizontal rows. Each row is defined by three dashed lines: a top line, a middle line, and a bottom line, providing a guide for letter height and placement.









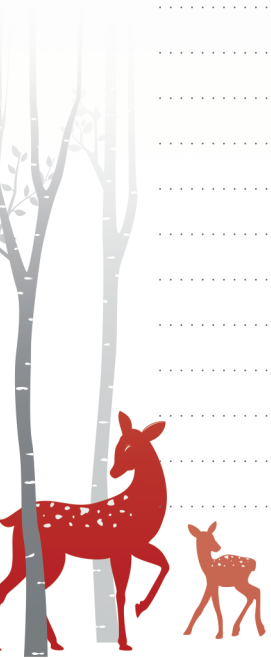
A central area of the page containing 20 horizontal lines for writing. Each line is composed of a solid top line, a dashed midline, and a solid bottom line, providing a guide for letter height and placement.





A central writing area with horizontal dashed lines for text entry.





Handwriting practice lines consisting of 20 horizontal rows. Each row is defined by two dotted lines, with a solid line in the center of each row to guide letter height.







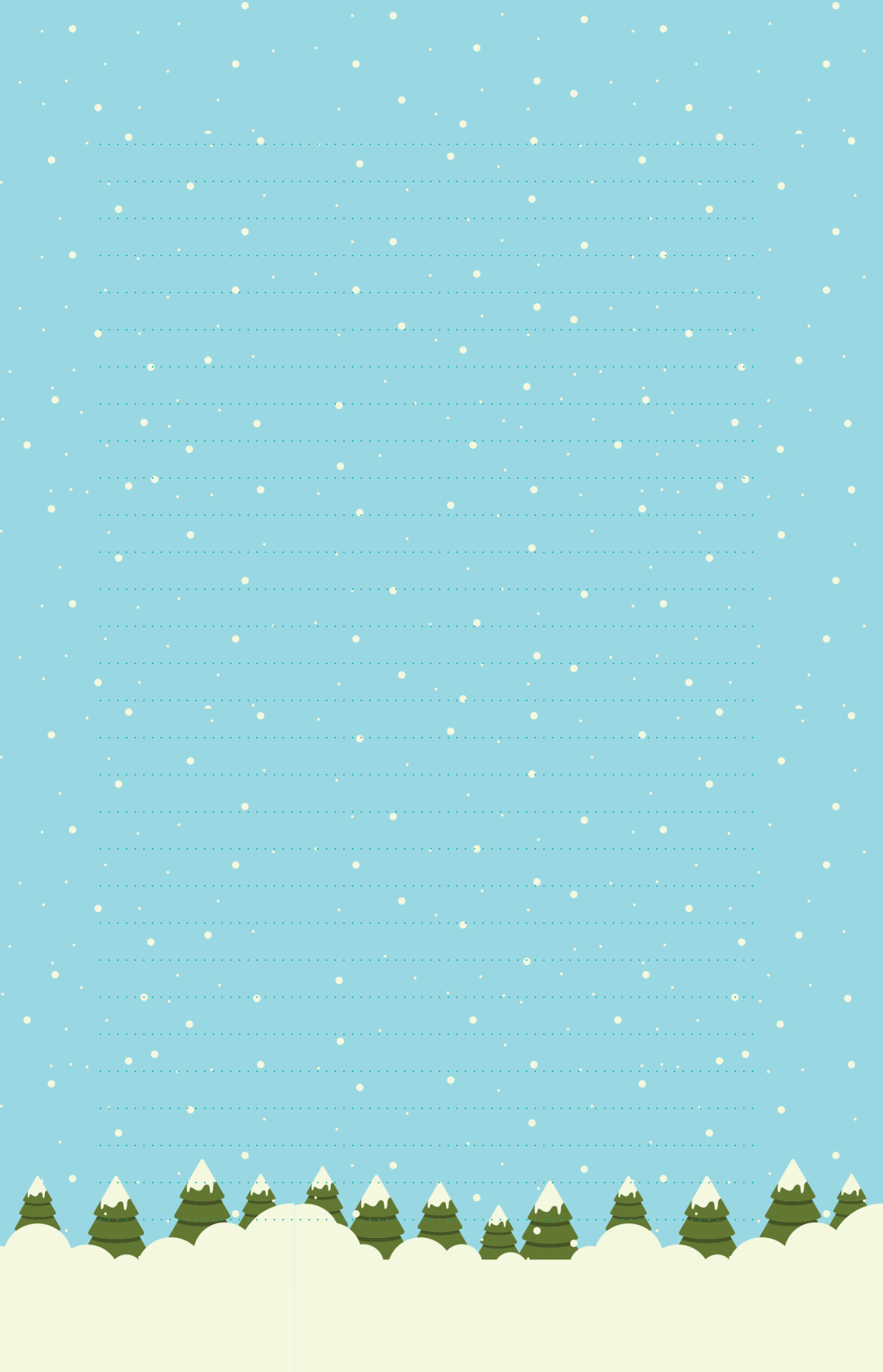
Handwriting practice lines consisting of 20 horizontal rows. Each row is defined by two dotted lines, with a solid red line at the top and bottom of the entire section.

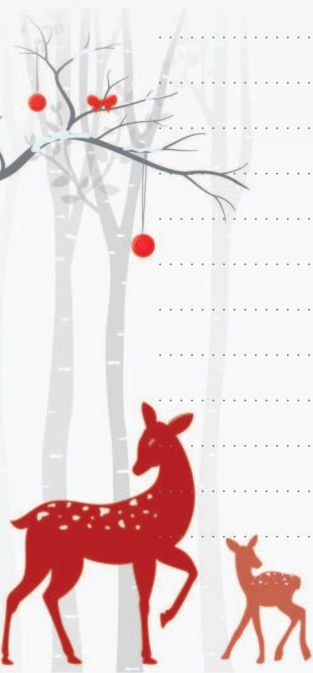












Handwriting practice lines consisting of 20 horizontal dotted lines on a light gray background.

