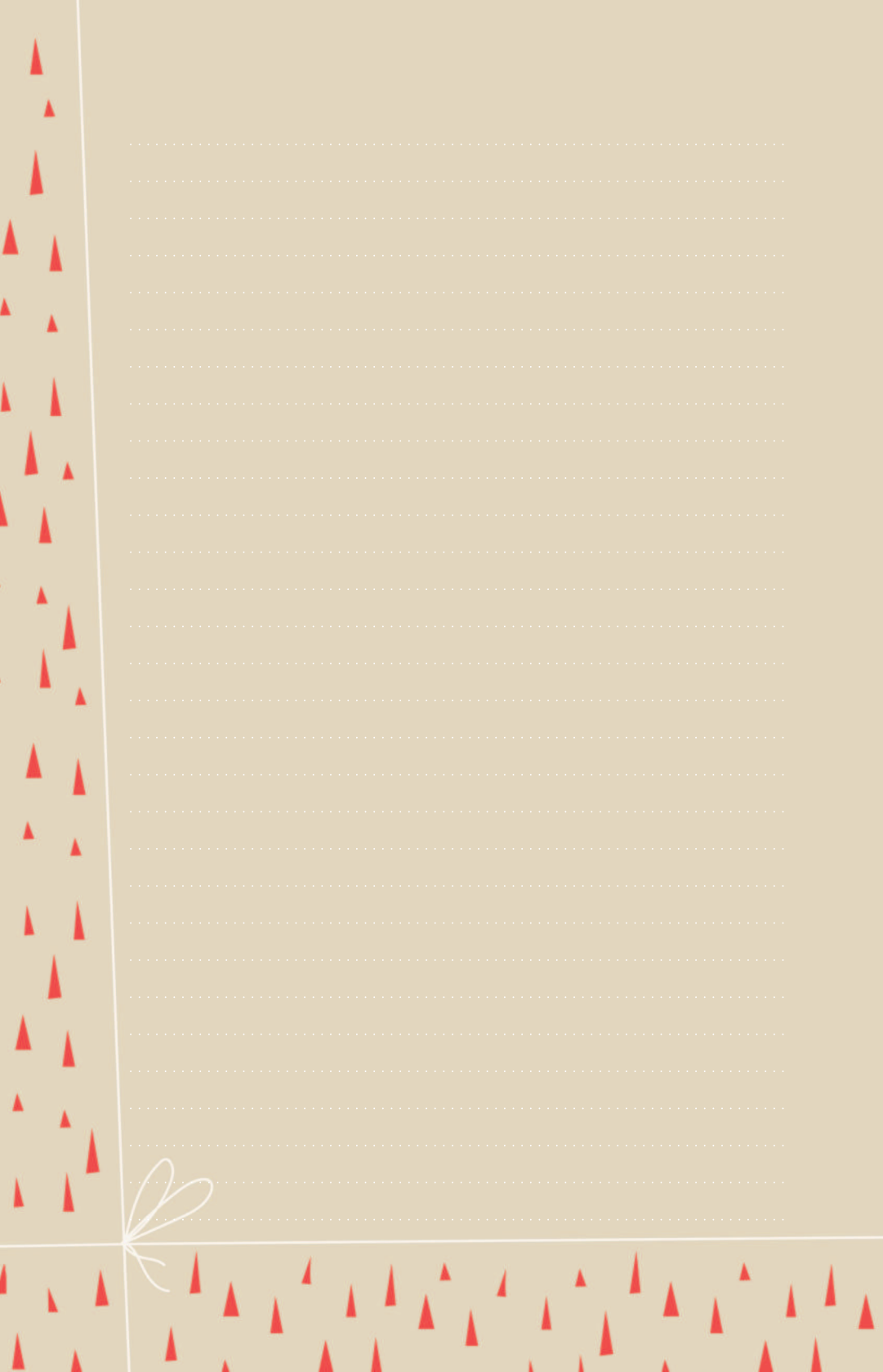


Этот блокнот принадлежит









Handwriting practice lines consisting of 20 horizontal rows. Each row is defined by three dashed lines: a top line, a middle line, and a bottom line, providing a guide for letter height and placement.









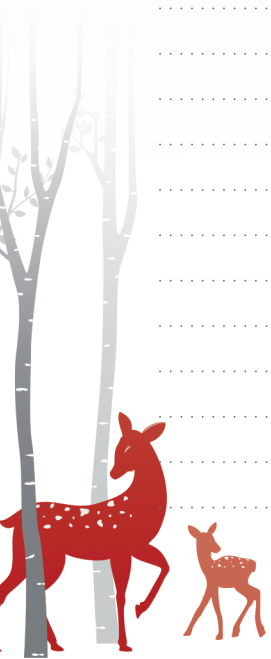
A central writing area consisting of 20 horizontal lines. Each line is composed of a solid top line, a dashed midline, and a solid bottom line, providing a guide for letter height and placement.





A central writing area consisting of 20 horizontal rows. Each row is defined by two dotted lines, with a solid line in the middle, providing a guide for letter height.





Handwriting practice lines consisting of 20 horizontal rows. Each row is defined by two dotted lines, with a solid line in the center of each row to guide letter height.







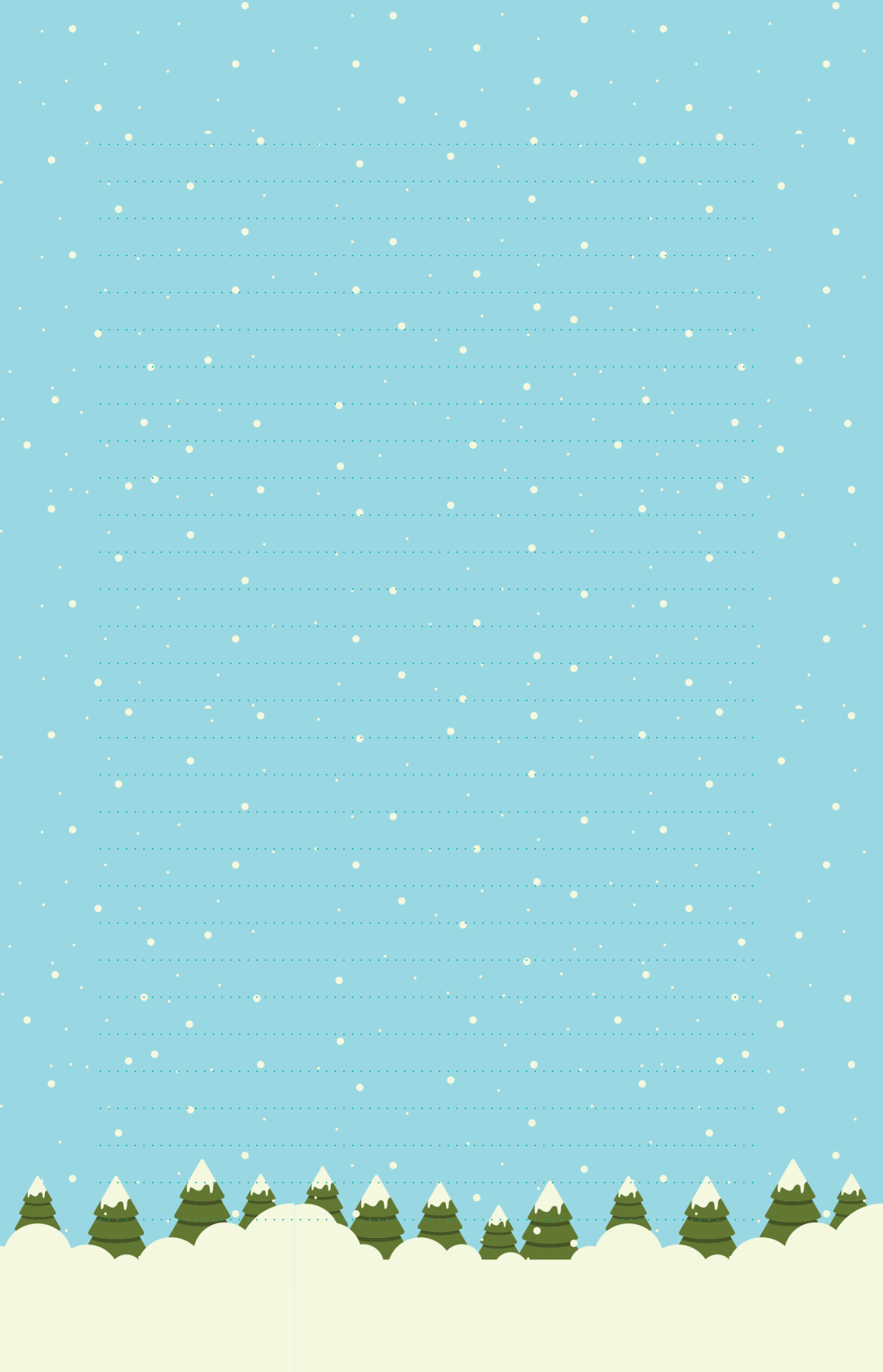
A series of horizontal dotted lines for writing, spanning the width of the page.

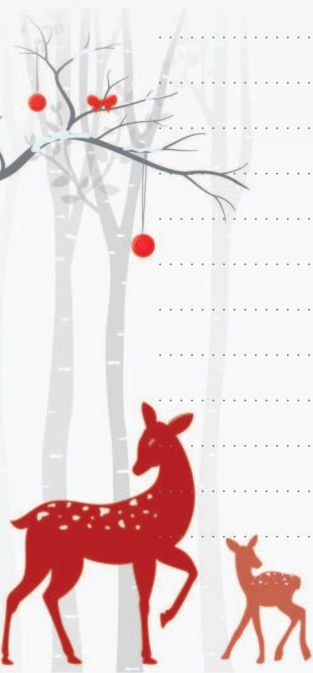












Handwriting practice lines consisting of 20 horizontal dotted lines on a light gray background.

